

State of Wyoming Corner Record

(In compliance with the CORNER PERPETUATION AND FILING ACT, Wyoming Statutes, 1977, Section 36-11-101, et. seq., and the Rules and Regulations of the Board of Registration for Professional Engineers and Professional Land Surveyors)

Reverse side of this form may be used if more space is needed.

Record of original survey and citation of source of historical information (if corner is lost or obliterated). Description of corner monumentation evidence found and/or monument and accessories established to perpetuate the location of this corner. Sketch of relative location of monument, accessories, and reference points with course and distance to adjacent corner(s) (if determined in this survey). Method and rationale for reestablishment of lost or obliterated corner.

G.L.O. Notes: U.S. Deputy Surveyor, Alfred M. Rogers, June 20, 1871; 80.00 Chains... Set a red sand stone 20 x 8 x 6 for corner to Sections 19, 20, 29 & 30;

Subsequent Records: Laramie County Engineers office records indicates C.R. #86 with a 80' RofW being surveyed in County Roads Book No. 23, Page 2 along with road index cards indicating stones set 2-23-1926. Survey notes indicate "NW Cor 29-15-63 Set C.R. 40' E & W"
Found: Nothing

Set: At the longitudinal centerline split of 80' right of way fences of Laramie County Road No. 143, surveyed circa 1926, and the latitudinal position of a east-west fence line east that is supported by found existing original monuments as being an old fence memorializing the original section lines, I set a No. 5 x 24" rebar with a marked 2" Aluminum Cap approximately 0.05' below the asphaltic Laramie County Road No. 143.

See back of this sheet for ties to adjacent monuments.

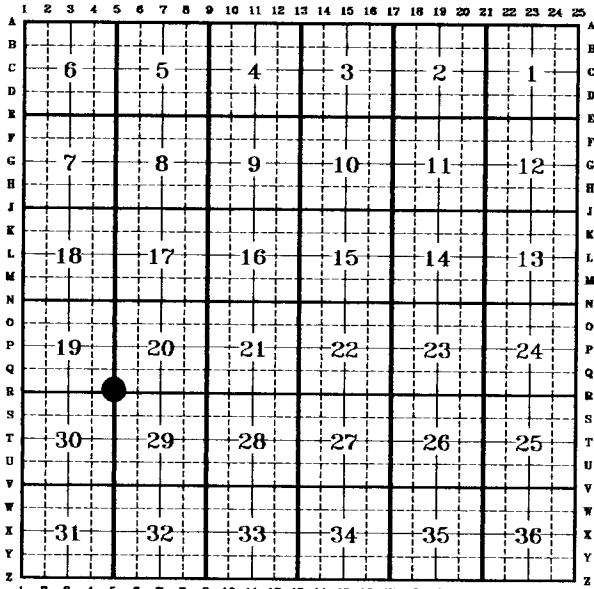
Aluminum Cap Markings

T.15N. R.63W.
S.19 | S.20
S.30 | S.29
 1994
 PLS 2927

200713
 LARAMIE COUNTY CLERK
 CHEYENNE, WY.
 97 APR 7 PM 4 40

Date of Field Work: 17, April, 1994 Office Reference: EXXON Looseleaf Pg. 72

CROSS INDEX DIAGRAM

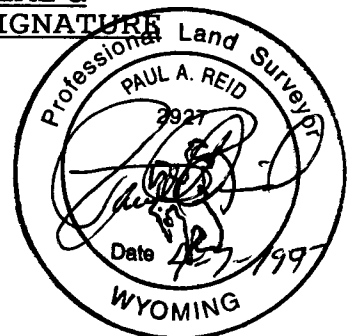


Firm/Agency, Address

Paul A. Reid, A.V.I.p.c.
2035 Westland Road
Cheyenne, WY 82001

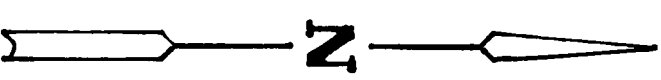
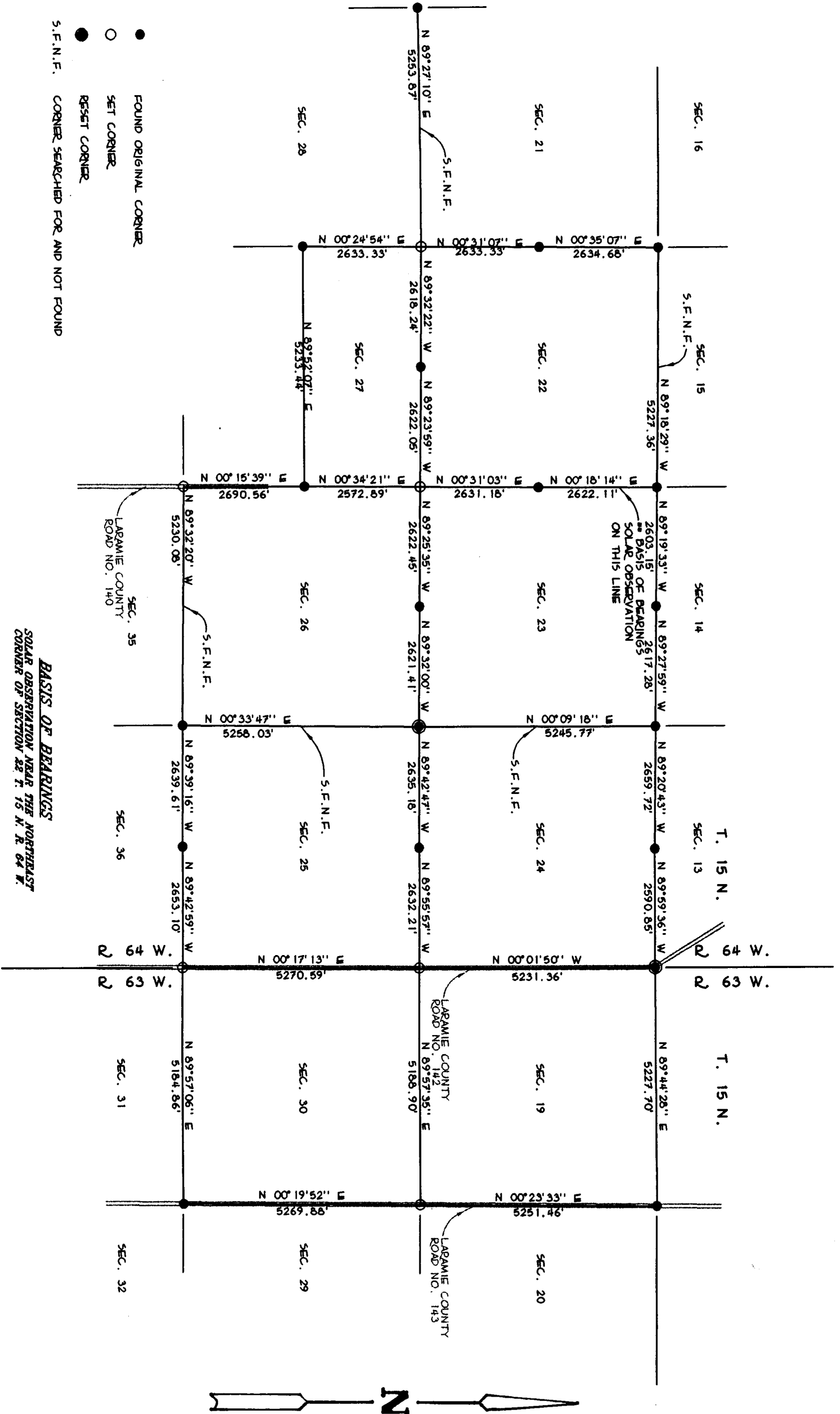
Telephone Number:
(307)-634-6017

This corner record was prepared by me or under my direction and supervision.
SEAL & SIGNATURE



Corner Name: NE Corner Section: 30 T 15N R 63W; 6TH P.M. Cross-Index No.: R-5

- FOUND ORIGINAL CORNER
- SET CORNER
- RESET CORNER
- S.F.N.F. CORNER SEARCHED FOR AND NOT FOUND



BASIS OF BEARINGS

SOLAR OBSERVATION NEAR THE NORTHEAST CORNER OF SECTION 26 T. 15 N. R. 64 W.